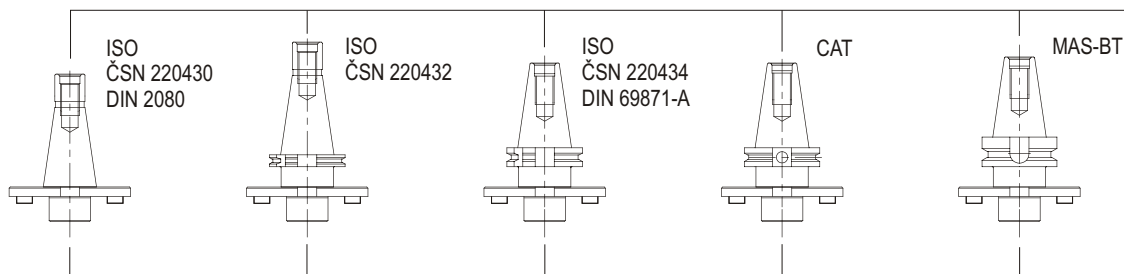
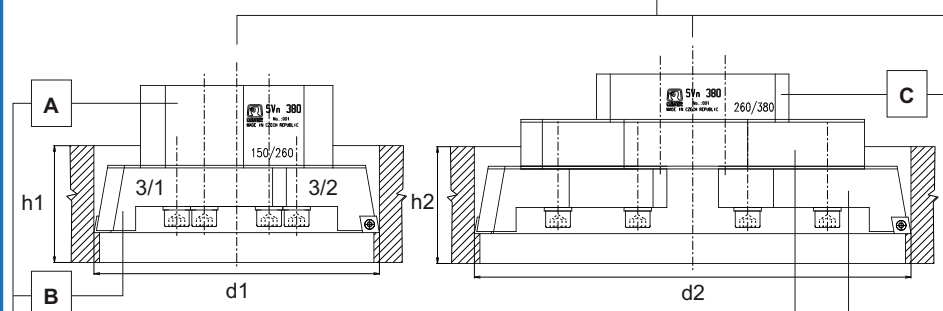


SVn

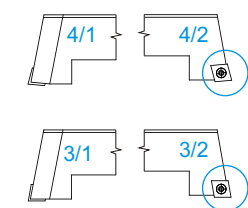
NAREX MTE®



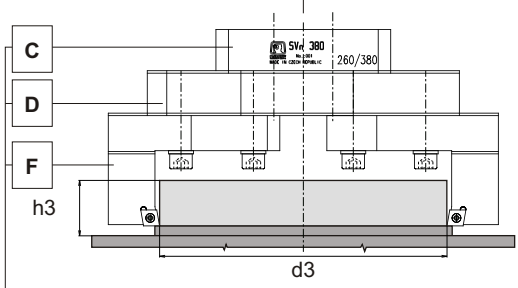
code		SVn90	SVn380	SVn600
208.909	40x40x90 ISO 40 DIN 2080	●	●	
208.930	40x40x90 ISO 40 ČSN 220432	●	●	
208.961	40x40x90 ISO 40 DIN 69871-A	●	●	
208.848	40x40x60 MAS-BT 40	●	●	
208.919	50x40x90 ISO 50 DIN 2080	●	●	
208.947	50x40x90 ISO 50 ČSN 220432	●	●	
208.961	50x40x90 ISO 50 DIN 69871-A	●	●	
208.848	50x40x70 MAS-BT 50	●	●	
208.879	HSK A63x40-60	●	●	
208.886	HSK A100x40-60	●	●	
208.923	50x60x130 ISO 50 DIN 2080			●
208.954	50x60x130 ISO 50 ČSN 220432			●
208.985	50x60x130 ISO 50 DIN 69871			●
208.862	50x60x80 MAS BT 50			●



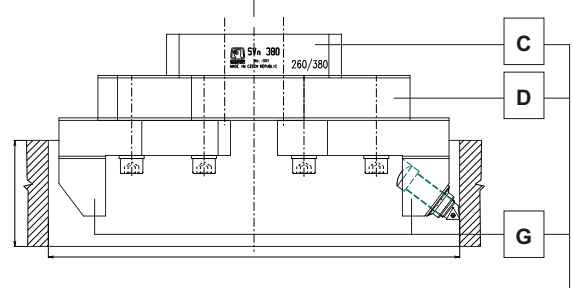
model + A + B		h1 max	d1 max
SVn 90	+ 1/0 code 203.331 (A) + 3/1+3/2 code 281.766 (B) [4/1+4/2 code 281.773]	120 mm	105-160 mm
SVn 380	+ 1/1 code 281.612 (A) + 3/1+3/2 code 281.704 (B) [4/1+4/2 code 281.711]	90 mm	150-260 mm



model + C + D + E		h2 max	d2 max
SVn 380	+ 1/2 code 281.636 (C) + 2/1 code 281.681 (D) + 3/1+3/2 code 281.766 (E) [4/1+4/2 code 281.773]	130 mm	260-380 mm
SVn 600	+ 1/3 code 281.650 (C) + 2/2 code 281.681 (D) + 3/1+3/2 code 281.704 (E) [4/1+4/2 code 281.711]	150 mm	370-490 mm
SVn 600	+ 1/3 code 281.650 (C) + 2/3 code 281.698 (D) + 3/1+3/2 code 281.704 (E) [4/1+4/2 code 281.711]	150 mm	480-600 mm



model + C + D + F		h3 max	d3 max
SVn 380	+ 1/1 code 281.612 (C) + 2/1 code 281.681 (D) + 5/1+5/1 code 281.728 (F)	45 mm	60-170 mm
SVn 380	+ 1/2 code 281.636 (C) + 2/1 code 281.681 (D) + 5/1+5/1 code 281.728 (F)		140-290 mm
SVn 600	+ 1/3 code 281.650 (C) + 2/2 code 281.681 (D) + 5/1+5/1 code 281.728 (F)	45 mm	255-400 mm
SVn 600	+ 1/3 code 281.650 (C) + 2/3 code 281.698 (D) + 5/1+5/1 code 281.728 (F)		365-510 mm



model + C + D + G		h3 max	d3 max
SVn 380	+ 1/1 code 281.612 (C) + 2/1 code 281.681 (D) + 6/1+P code 281.735 (G)	155 mm	150-265 mm
SVn 380	+ 1/2 code 281.636 (C) + 2/1 code 281.681 (D) + 6/1+P code 281.735 (G)		165 mm
SVn 600	+ 1/3 code 281.650 (C) + 2/2 code 281.681 (D) + 6/1+P code 281.735 (G)	185 mm	370-495 mm
SVn 600	+ 1/3 code 281.650 (C) + 2/3 code 281.698 (D) + 6/1+P code 281.735 (G)		185 mm

- 1/0, 1/1, 1/2 - body, těleso, körper, cuerpo, корпус
- 2/1, 2/2, 2/3 - extension arm, rameno, konsole, brazo, плечо
- 3/1, 3/2 - internal tool, nůž vnitřní, innendrehmeissel, cuchilla interior, резец внутренний
- 4/1, 4/2 - internal tool, nůž vnitřní, innendrehmeissel, cuchilla interior, резец внутренний
- 5/1, 5/2 - external tool, nůž vnější, innendrehmeissel, cuchilla exterior, резец наружный
- 6/1 - finishing tool, nůž dokončovací, schlichtdrehmeissel, cuchilla de acabado, резец чистовой
- P - counterbalance, protizávaží, balanciergewicht, contrabalanza, противовес

BASIC MACHINING OPERATIONS CARRIED OUT BY THE BORING HEADS SVn
ZÁKLADNÍ STROJNÍ OPERACE PROVÁDĚNÉ POMOCÍ SVn
ELEMENTARE ARBEITSGÄNGE, DIE MITTELS SVn REALISIERBAR SIND

OPERACIONES BÁSICAS MECÁNICAS REALIZADAS CON SVn
ОСНОВНЫЕ СТАНОЧНЫЕ ОПЕРАЦИИ ВЫПОЛНЕННЫЕ ГОЛОВКАМИ SVn (СВн)